

FOR IMMEDIATE RELEASE

**MEDIA CONTACTS:**

Clara Tsang  
Director of Public Relations  
[ctsang@outletsatcastlerock.com](mailto:ctsang@outletsatcastlerock.com)

Roberto Johnson  
Public Relations Manager  
[rjohnson@outletsatcastlerock.com](mailto:rjohnson@outletsatcastlerock.com)

**Outlets**  
at **Castle Rock**

Your Outlet for Life

**AJ Mitchell Set to Perform at Outlets at Castle Rock's Tree Lighting Concert on  
Saturday, Nov. 16**

*Colorado's favorite outlet center kicks off the holidays with a free concert, Santa Claus' first public appearance of the season, the lighting of a 55 ft. white fir tree and fireworks*

**CASTLE ROCK, Colo. (Oct. XX, 2019)** – More than 8,000 multi-colored, twinkling lights will illuminate Outlets at Castle Rock's Christmas Tree on Saturday, Nov. 16 during the center's 14<sup>th</sup> Annual Tree Lighting Concert. Featuring performances from rising pop star AJ Mitchell and local favorite Raising Cain, the free concert will run from 4 p.m. to 6 p.m. and is expected to draw in thousands for a family-friendly kickoff to the holiday season.

The highlight of the concert is the lighting of the 55 ft. white fir Christmas tree, with a countdown led by Santa Claus, followed by a holiday firework show. Sourced from the Shasta-Trinity National Forest, the tree stands more than 10 feet taller than the Big Blue Bear at the Denver Convention Center. Near the end of its lifespan, this tree is part of an important forest manicuring process and multiple young, budding trees were planted in its place.

In addition to the fun holiday festivities, attendees will be able to enjoy a delicious selection of food trucks and beverages, including bites from Auntie Anne's, Philly On the Go and Rocky Mountain Chocolate Café and adult beverages from 105 West Brewing Company. Pre-show food and festivities will begin at 3 p.m. All donations will benefit the Humane Society of the South Platte Valley.

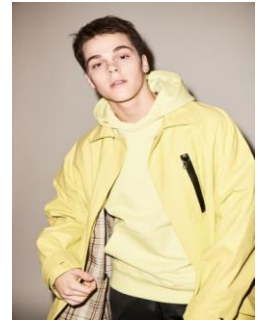
"We're hoping that this night will be a magical holiday experience unlike anything else in Colorado," said Jennifer Simpson, Outlets at Castle Rock Marketing Director. "We'll have incredible performances, exciting holiday decorations, the lighting of our magnificent Christmas tree and more!"

The 14<sup>th</sup> Annual Tree Lighting Concert provides a first-look opportunity for thousands of Colorado residents and eager holiday shoppers to get up close and personal with emerging talent that will soon be played on pop charts and top countdowns all over the world. Past performers include Tyler Rich (2018), Morgan Evans (2017), Brian Justin Crum (2016) and more.

Additional details about this year's performers are included below:

### **AJ MITCHELL**

Teenage singer-songwriter AJ Mitchell first emblazoned his signature pop and R&B sound on Instagram, stacking 1.5 million followers after posting covers and original songs that captured his silky vocal style and garnered him fans around the world. Citing a well-rounded host of influences, from Coldplay to the Beatles to Bruno Mars and Lil Wayne, his songwriting ability aligns with a vocal presence that raises expectations about the bright musical future ahead. Now, with more than 15 million plays on Spotify, he's launching his Epic Records debut EP, *Hopeful*, with a repertoire of songs that broadens his sound and expounds on subject matter very familiar to the charismatic teen.



### **RAISING CAIN**

Since 2001, Raising Cain has been providing live music throughout the entire country. Six amazing musicians comprise the core of the band and are known for bringing that magic "X factor" that is so rare among live music bands – a perfect, unique combination of excellence in musical performance, stage show and event facilitation. Featuring dazzling choreography, moves and grooves, their musicians are full-time entertainers who sing, dance and emcee events with incredible professionalism and pizzazz.



Outlets at Castle Rock is conveniently located between the Denver Metro Area and Colorado Springs region at I-25 and Exit 184 and Exit 185 in Castle Rock, Colo. To join the Outlets at Castle Rock community and receive Tree Lighting Concert updates, follow us on Facebook [@OutletsCR](#), Instagram [@OutletsCR](#) and Twitter [@OutletsCR](#) and search #OCRTreeLighting.

### **About Craig Realty Group**

Craig Realty Group is a shopping center development and management firm founded by Steven L. Craig and is based in Newport Beach, Calif. A leader in the development and management of high income-producing, upscale factory outlet centers, Craig Realty Group owns, operates and manages nearly five million square feet of existing retail development in eight states: Outlets at Anthem in Phoenix, Ariz.; Outlets at Barstow in Barstow, Calif.; Cabazon Outlets located near Palm Springs, Calif.; Citadel Outlets in Los Angeles, Calif.; Outlets at San Clemente in San Clemente, Calif.; Outlets at Castle Rock located south of Denver, Colo.; Outlets at Loveland located north of Denver, Colo.; Outlets at Silverthorne located west of Denver, Colo.; Kapolei Commons, Oahu, Hawaii; East Hills Mall in St. Joseph, Miss.; Outlets at Conroe located near Houston, Texas; Outlets at Hillsboro in Hillsboro, Texas; Outlets at Traverse Mountain in Lehi, Utah; and Outlets at the Dells in Baraboo, Wis. The newest property – the award-winning Outlets at San Clemente – opened in November 2015 and offers stunning views of the Pacific Ocean. Projects in development include Outlets at Richmond, Va.; Outlets at Lacey, Wash.; a power center in Garfield Heights, Ohio (Cleveland) and the redevelopment of Outlets at Conroe, near Houston, Texas. Craig Realty Group founder Steve Craig previously developed Desert Hills Premium Outlets, Carlsbad Company Stores and Woodburn Company Stores, three of the most successful manufacturer outlet centers, and was instrumental in developing Camarillo Premium Outlets. For more information, visit [www.craigrealtygroup.com](http://www.craigrealtygroup.com).

###